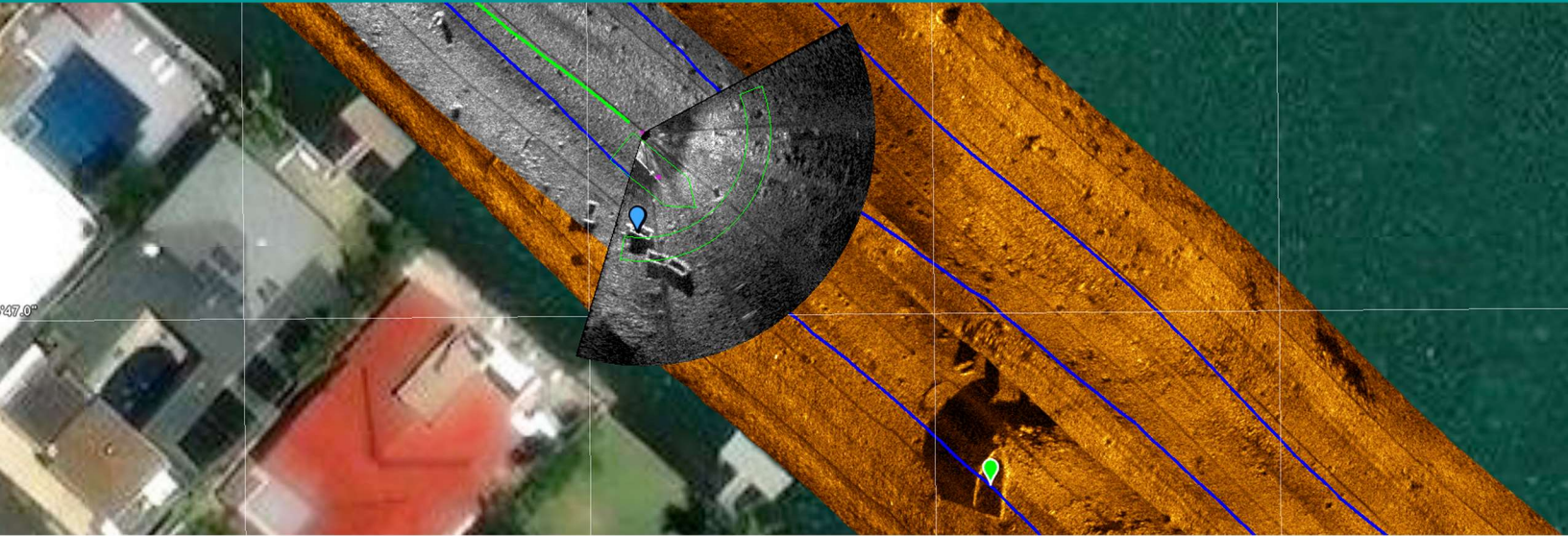




SAMM

Stand Alone Mosaicking Module



Feature-Based Re-Navigation Tools Essential for ROV & Towed Surveys

Generation of Bathymetry Map from Sidescan Altitude and Single Beam Echo Sounder

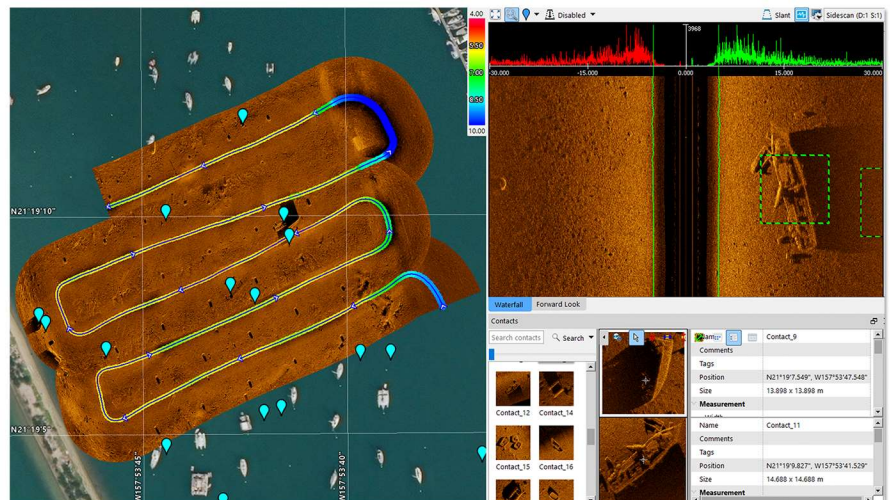
2D and 3D Scanning Sonar Mosaicking and Point Cloud Display

Photo Mosaicking of AUV Camera Data and Fence Diagram of Sub-bottom Profiler Data

SAMM automatically creates mosaics of your sidescan, forward look and scanning sonar data in real time over co-registered charts or imagery, while logging the raw data. SAMM's post processing features let you adjust swath layering, enhance sonar imagery, improve navigation accuracy and export mosaics to Google Earth and GIS/CAD software.

SAMM is an affordable, plug-and-play software package that turns your sonar into a survey system, giving you real time mosaics and 100% confidence in your coverage.

www.oicinc.com



OCEANIC
IMAGING
CONSULTANTS

New SAMM Feature - InterNAV

SAMM's InterNAV tools allow users to adjust trackline navigation by identifying and matching features in overlapping swaths, or referencing to charted features with known positions. This tool is ideally suited for ROV & towed surveys.

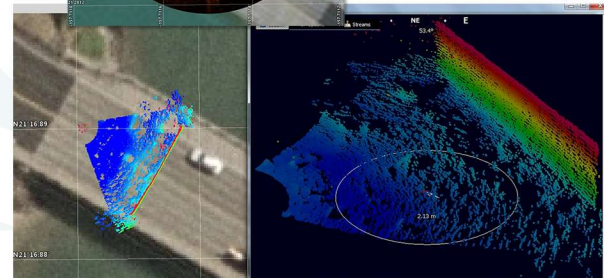
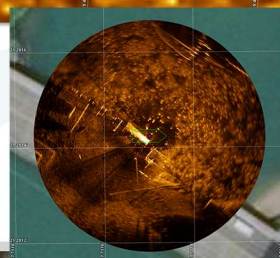
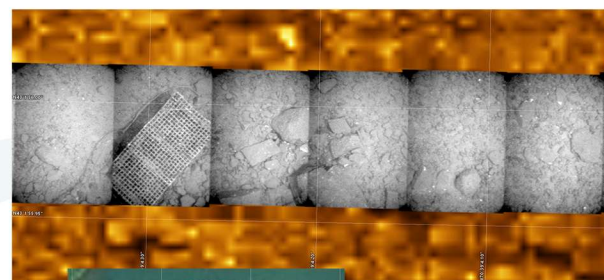


Data Acquisition Features:

- Stand alone module, seamlessly compatible with your existing sidescan, forward look, scanning sonar and single beam echo sounder
- Interactive control of track layering, processing and sensor offsets
- Simultaneous mosaicking and logging of broadcast data
- NMEA broadcast of targets
- Pan, zoom, target marking and trackline display
- Mission planning module
- Simultaneous sidescan and gapfill support
- 2D bathymetry map and 3D point cloud display of 3D scanning sonar data

Post-Acquisition Processing Features:

- InterNAV feature-based re-navigation tool to improve swath accuracy
- Sensor/navigation offset and bias corrections
- Smoothing and import of navigation and metadata
- Per-track sonar imagery adjustment
- Sidescan bottom tracking, layback and image normalization
- Layering of individual tracks for optimal mosaic composition
- Contact marking, measurement, classification and export
- Background display of air photos, satellite imagery, raster and vector charts
- Easy image export to GeoTIFF and Google Earth / Map tiles
- Photo mosaicking of AUV camera data and fence diagram of sub-bottom profiler data



Sonar Equipment:



Kongsberg Mesotech
M3/Flexview/MS1000

Tritech Gemini 720/1200

Blueprint Subsea
Oculus and Starfish

R2Sonic 202x FLS



Teledyne BluView
2D Multibeam

Sound Metrics
ARIS Explorer

Marine Electronics
Dolphin SeaView

DASS710



Klein Sidescan

EdgeTech Sidescan

GeoAcoustics Pulsar

Imagenex
BlackFin and YellowFin

Post-Processing:

Reson and Norbit FLS
Marine Sonic
C-MAX
FSI HMS-1400/624
Sonadyne Solstice
Humminbird
OIC
XTF



1144 10th Ave, Suite 200, Honolulu, HI 96816
TEL: 808 539 3706 FAX: 808 791 4075
www.oicinc.com info@oicinc.com