

# ROVer's Eye

Real-time 3-D Seafloor Visualization Software



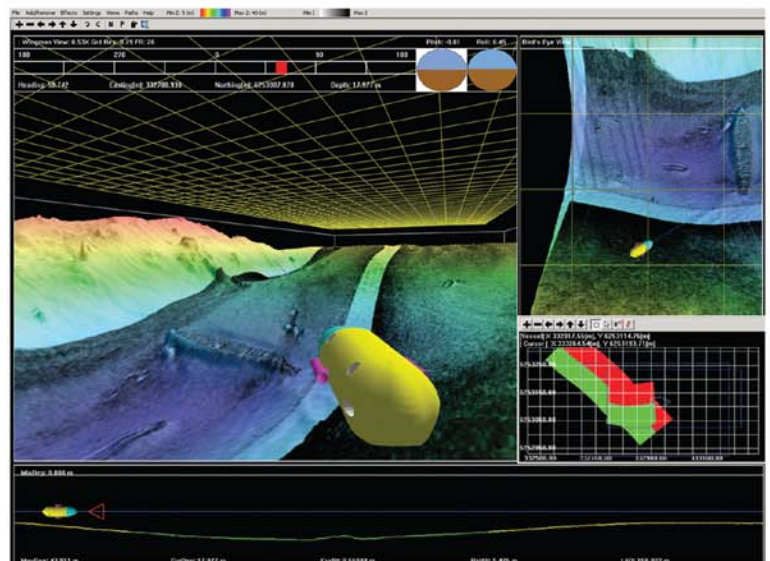
Virtual Sub-sea Reality

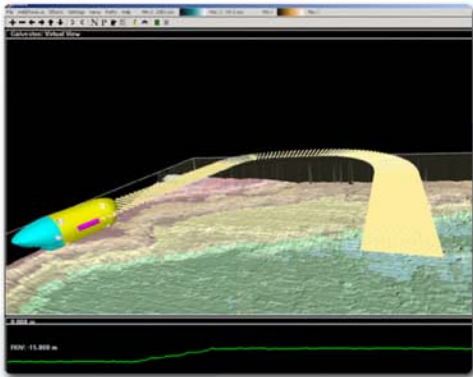
3-D Visualization

Vehicle Navigation

Hazard Avoidance

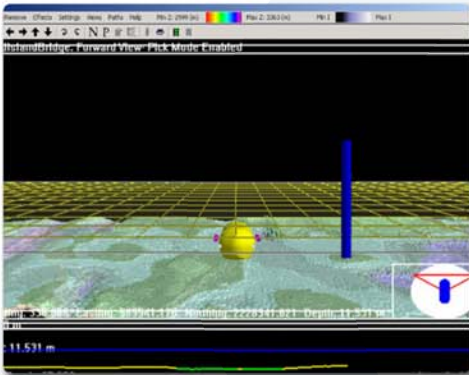
ROVer's Eye is a PC-based real-time 3-D virtual reality package designed to help underwater vehicle operators navigate the seabed terrain and avoid unseen hazards. ROVer's Eye renders the sub-sea environment at 30 frames per second using data acquired by on-board sonar sensors during real time operation, or from previously stored data, including terrain overlays, "as-built" features, other vehicles, and self-ship. Candidate platforms for ROVer's Eye include ROVs and AUVs, manned or unmanned submersibles, forward looking scanners / sonars and towed devices.





### 3D Real-time Perspective

- User-definable, steerable views include: Virtual (vehicle independent), Egocentric (relative to vehicle), Bird's Eye (above the vehicle) or Wing man (offset from the vehicle).
- Real-time processing and display of acquired sidescan, forward-look and bathymetric data sets.

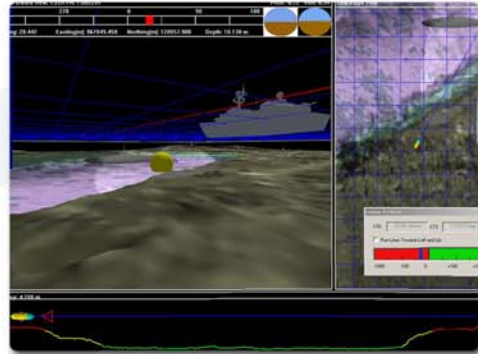


### Multiple Applications

- ROV's Eye can be run as an add-on to our data acquisition program, GeoDAS, or as a stand-alone program for use in data playback or vehicle pilot training.
- Use for vehicle safety in the field, data quality control, and production of data flythrough movies.

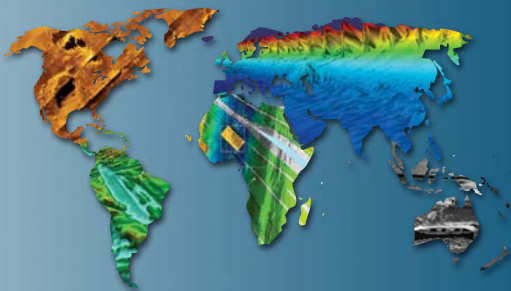
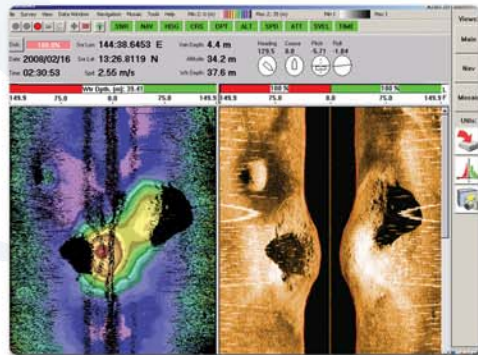
### Visual Support

- Pre-flight 3-D path planning allows you to design an onscreen visual flight track with known survey coverage
- Sidescan overlays of the seabed can be added to provide an enhanced image of the ocean floor structure.



### Complete Vehicle Data Display

- The ROV's Eye GUI provides, in addition to the main 3-D view of vehicle position, all vehicle position and attitude real-time data.
- Additional view options include superimposing of a sea surface grid or target markers from GeoDAS or other data source.



## Oceanic Imaging Consultants, Inc.

Founded in 1993, OIC provides seafloor mapping software, systems and services to the world's military, government, commercial, and academic markets. With a solid understanding of the requirements of the hydrographic community and an emphasis on providing quality customer support, OIC should be your first stop for all of your seafloor mapping needs.



1144 10th Ave, Suite 200 Honolulu, HI 96816  
 TEL: 808 539 3706 FAX: 808 791 4075  
 www.oicinc.com info@oicinc.com